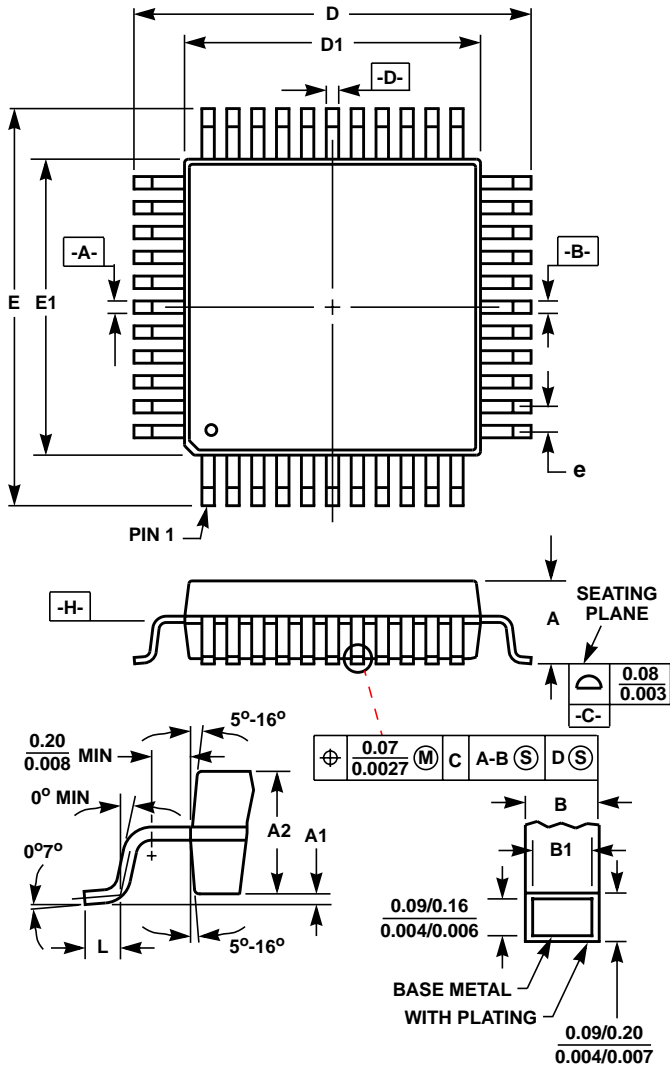


Metric Plastic Quad Flatpack Packages (MQFP/PQFP)



Q256.28x28

256 LEAD METRIC PLASTIC QUAD FLATPACK PACKAGE

SYMBOL	INCHES		MILLIMETERS		NOTES
	MIN	MAX	MIN	MAX	
A	-	0.146	-	3.70	-
A1	0.002	0.010	0.05	0.25	-
A2	0.130	0.136	3.29	3.45	-
B	0.005	0.009	0.13	0.23	6
B1	0.005	0.007	0.13	0.19	-
D	1.201	1.208	30.50	30.70	3
D1	1.098	1.106	27.90	28.10	4, 5
E	1.201	1.208	30.50	30.70	3
E1	1.098	1.106	27.90	28.10	4, 5
L	0.020	0.030	0.50	0.75	-
N	256		256		7
e	0.0157 BSC		0.40 BSC		-

Rev. 1 12/98

NOTES:

1. Controlling dimension: MILLIMETER. Converted inch dimensions are not necessarily exact.
2. All dimensions and tolerances per ANSI Y14.5M-1982.
3. Dimensions D and E to be determined at seating plane $\square-C-$.
4. Dimensions D1 and E1 to be determined at datum plane $\square-H-$.
5. Dimensions D1 and E1 do not include mold protrusion. Allowable protrusion is 0.25mm (0.010 inch) per side.
6. Dimension B does not include dambar protrusion. Allowable dambar protrusion shall be 0.08mm (0.003 inch) total.
7. "N" is the number of terminal positions.
8. Dimensions conform to JEDEC outline MO-143 FB-2 Issue C.