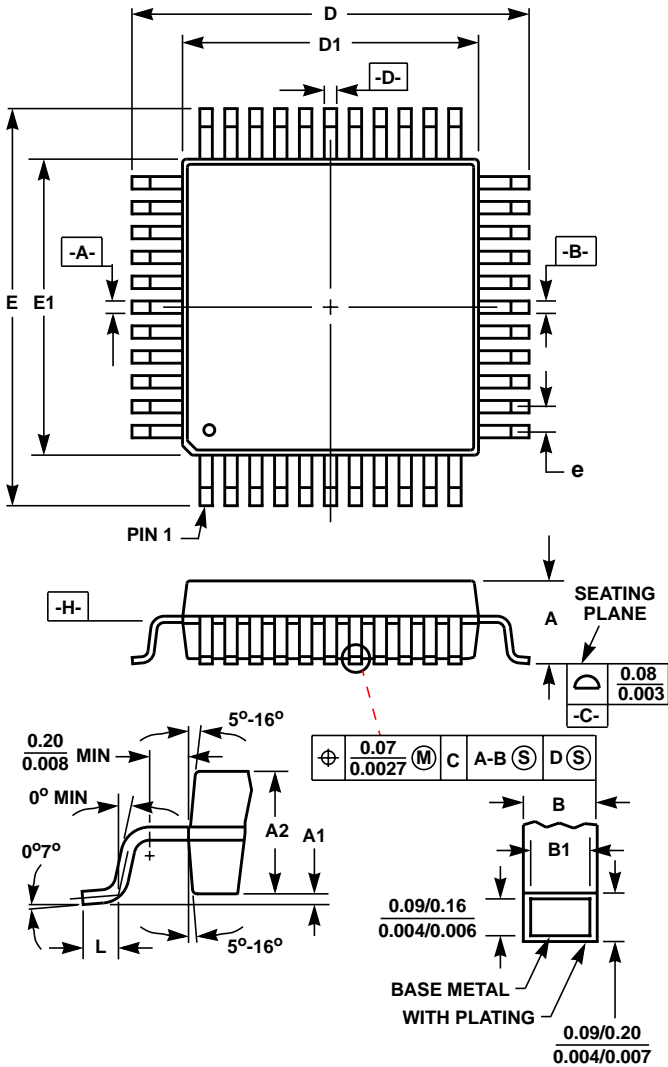


Thin Plastic Quad Flatpack Packages (LQFP)



Q208.28x28A (JEDEC MS-026BJB ISSUE C)
208 LEAD THIN PLASTIC QUAD FLATPACK PACKAGE

SYMBOL	INCHES		MILLIMETERS		NOTES
	MIN	MAX	MIN	MAX	
A	-	0.062	-	1.60	-
A1	0.002	0.005	0.05	0.15	-
A2	0.054	0.057	1.35	1.45	-
B	0.007	0.010	0.17	0.27	6
B1	0.007	0.009	0.17	0.23	-
D	-	-	29.90	30.10	3
D1	1.098	1.106	27.90	28.10	4, 5
E	-	-	29.90	30.10	3
E1	1.098	1.106	27.90	28.10	4, 5
L	0.018	0.030	0.45	0.75	-
N	208		208		7
e	0.0197 BSC		0.50 BSC		-

Rev. 0 9/00

NOTES:

1. Controlling dimension: MILLIMETER. Converted inch dimensions are not necessarily exact.
2. All dimensions and tolerances per ANSI Y14.5M-1982.
3. Dimensions D and E to be determined at seating plane -C-.
4. Dimensions D1 and E1 to be determined at datum plane -H-.
5. Dimensions D1 and E1 do not include mold protrusion. Allowable protrusion is 0.25mm (0.010 inch) per side.
6. Dimension B does not include dambar protrusion. Allowable dambar protrusion shall be 0.08mm (0.003 inch) total.
7. "N" is the number of terminal positions.