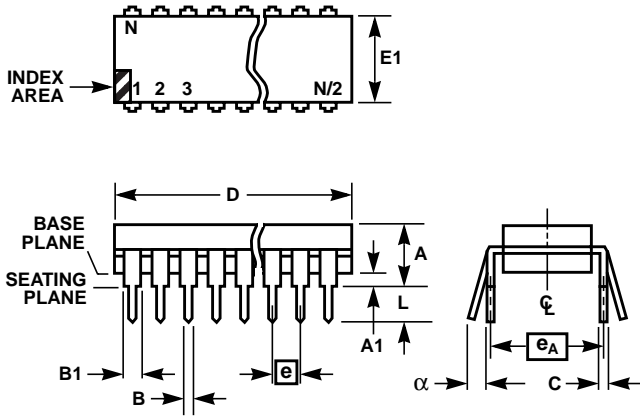


Dual-In-Line Plastic Packages (PDIP)



NOTES:

1. Controlling Dimensions: MILLIMETER. In case of conflict between English and Metric dimensions, the metric dimensions control.
2. Dimensions A, A1 and L are measured with the package seated in JEDEC seating plane gauge GS-3.
3. D and E1 dimensions do not include mold flash or protrusions.
4. e_A is measured with the leads constrained to be perpendicular to base plane.
5. N is the maximum number of terminal positions.

E42.6A-S

42 LEAD DUAL-IN-LINE PLASTIC PACKAGE

SYMBOL	INCHES		MILLIMETERS		NOTES
	MIN	MAX	MIN	MAX	
A	0.193	0.212	4.9	5.4	2
A1	0.040	-	1.0	-	2
B	0.018	0.025	0.45	0.65	-
B1	0.046	0.057	1.15	1.45	-
C	0.008	0.013	0.20	0.35	-
D	2.162	2.181	54.9	55.4	3
E1	0.516	0.531	13.1	13.50	3
e	0.100 BSC		2.54 BSC		-
e_A	0.600 BSC		15.24 BSC		4
L	0.119	-	3.0	-	2
N	42		42		5
α	0°	15°	0°	15°	-

Rev. 1 4/95