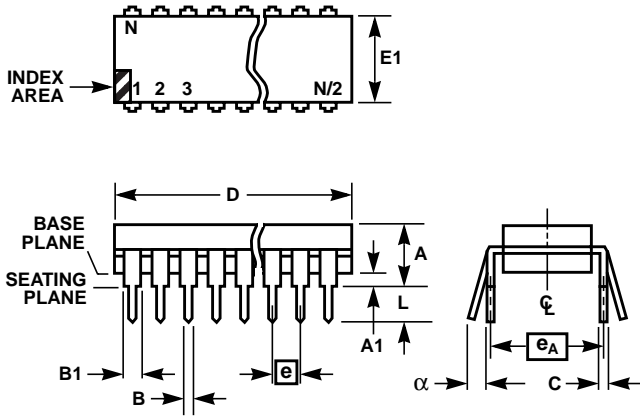


Dual-In-Line Plastic Packages (PDIP)



NOTES:

1. Controlling Dimensions: MILLIMETER. In case of conflict between English and Metric dimensions, the metric dimensions control.
2. Dimensions A, A1 and L are measured with the package seated in JEDEC seating plane gauge GS-3.
3. D and E1 dimensions do not include mold flash or protrusions.
4. e_A is measured with the leads constrained to be perpendicular to base plane.
5. N is the maximum number of terminal positions.

E28.6A-S

28 LEAD DUAL-IN-LINE PLASTIC PACKAGE

SYMBOL	INCHES		MILLIMETERS		NOTES
	MIN	MAX	MIN	MAX	
A	0.178	0.196	4.5	5.0	2
A1	0.020	-	0.50	-	2
B	0.016	0.023	0.40	0.60	-
B1	0.042	0.053	1.05	1.35	-
C	0.008	0.13	0.20	0.35	-
D	1.485	1.503	37.7	38.2	3
E1	0.508	0.523	12.9	13.3	3
e	0.100 BSC		2.54 BSC		-
e_A	0.600 BSC		15.24 BSC		4
L	0.119	-	3.0	-	2
N	28		28		5
α	0°	15°	0°	15°	-

Rev. 1 4/95