

# Test Report

No. LPCI/15634/08  
CTS Ref. CTS/08/3783/ITW

Date: 2008/08/08

Page: 1 of 4

**ITW AMPANG INDUSTRIES PHIPPINES. INC.**  
**G/F SFB1 PEZA, BAGUIO ECOZONE, LOAKAN ROAD BAGUIO CITY PHILIPPINES**

The following merchandise was (were) submitted and identified by the client as:

Sample Description : Gray endplug – SPVC  
Sample Receiving Date : 2008/08/04  
Testing Period : 2008/08/04 to 2008/08/08

---

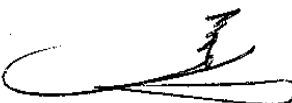
Test Requested : In accordance with the RoHS Directive 2002/95/EC, and its amendment directives.

Test Method : (1) With reference to BS EN 1122:2001, Method B for Cadmium Content.  
Analysis was performed by ICP  
(2) With reference to EPA Method 3051A for Lead Content.  
Analysis was performed by ICP  
(3) With reference to EPA Method 3051A for Mercury Content.  
Analysis was performed by ICP  
(4) With reference to EPA Method 3060A & 7196A for Hexavalent Chromium.  
Analysis was performed by UV/Vis Spectrophotometry.  
(5) With reference to EPA Method 3540C/3550B for PBB / PBDE Content.  
Analysis was performed by GC/MS.

Test Results : Please refer to next page.

Analysts : Lim Meng Hoe & Jocelyn Christmas

SGS LABORATORY SERVICES (M) SDN. BHD.



CHONG KIEN LEN  
B.Sc.(HONS) AMIC  
LAB MANAGER

This document is issued by the Company under its General Conditions of Service printed overleaf or available on request and accessible at [http://www.sgs.com/terms\\_and\\_conditions.htm](http://www.sgs.com/terms_and_conditions.htm). Attention is drawn to the limitation of liability, indemnification and jurisdiction issues defined therein. Any holder of this document is advised that information contained hereon reflects the Company's findings at the time of its intervention only and within the limits of Client's instructions, if any. The Company's sole responsibility is to its Client and this document does not exonerate parties to a transaction from exercising all their rights and obligations under the transaction documents. Any unauthorized alteration, forgery or falsification of the content or appearance of this document is unlawful and offenders may be prosecuted to the fullest extent of the law.  
The results shown in this test report refer only to the sample(s) tested unless otherwise stated. This Test Report cannot be reproduced, except in full, without prior written permission of the Company.

# Test Report

No. LPCI/15634/08  
 CTS Ref. CTS/08/3783/ITW

Date: 2008/08/08

Page: 2 of 4

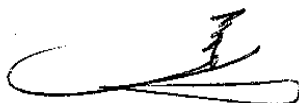
Test results by chemical method (Unit: mg/kg)

Test Item(s):	Method (refer to)	Result	MDL
Cadmium(Cd)	(1)	N.D.	2
Lead (Pb)	(2)	N.D.	2
Mercury (Hg)	(3)	N.D.	2
Hexavalent Chromium (CrVI) by alkaline extraction	(4)	N.D.	2
<b>Sum of Polybrominated Biphenyl (PBBs)</b>	(5)	N.D.	-
Monobromobiphenyl		N.D.	5
Dibromobiphenyl		N.D.	5
Tribromobiphenyl		N.D.	5
Tetrabromobiphenyl		N.D.	5
Pentabromobiphenyl		N.D.	5
Hexabromobiphenyl		N.D.	5
Heptabromobiphenyl		N.D.	5
Octabromobiphenyl		N.D.	5
Nonabromobiphenyl		N.D.	5
Decabromobiphenyl		N.D.	5
<b>Sum of Polybrominated Diphenylethers (PBDEs)</b>		N.D.	-
Monobromodiphenyl ether		N.D.	5
Dibromodiphenyl ether		N.D.	5
Tribromodiphenyl ether		N.D.	5
Tetrabromodiphenyl ether		N.D.	5
Pentabromodiphenyl ether		N.D.	5
Hexabromodiphenyl ether		N.D.	5
Heptabromodiphenyl ether		N.D.	5
Octabromodiphenyl ether		N.D.	5
Nonabromodiphenyl ether		N.D.	5
Decabromodiphenyl ether		N.D.	5

Test Part Description :

As per page 3

SGS LABORATORY SERVICES (M) SDN. BHD.



CHONG KIEN LEN  
 B.Sc.(HONS) AMIC  
 LAB MANAGER

This document is issued by the Company under its General Conditions of Service printed overleaf or available on request and accessible at [http://www.sgs.com/terms\\_and\\_conditions.htm](http://www.sgs.com/terms_and_conditions.htm). Attention is drawn to the limitation of liability, indemnification and jurisdiction issues defined therein. Any holder of this document is advised that information contained hereon reflects the Company's findings at the time of its intervention only and within the limits of Client's instructions, if any. The Company's sole responsibility is to its Client and this document does not exonerate parties to a transaction from exercising all their rights and obligations under the transaction documents. Any unauthorized alteration, forgery or falsification of the content or appearance of this document is unlawful and offenders may be prosecuted to the fullest extent of the law.  
 The results shown in this test report refer only to the sample(s) tested unless otherwise stated. This Test Report cannot be reproduced, except in full, without prior written permission of the Company.

## Test Report

No. LPCI/15634/08  
CTS Ref. CTS/08/3783/ITW

Date: 2008/08/08

Page: 3 of 4

### Test Part Description :

Sample Description : Gray endplug – SPVC

**ITW AMPANG INDUSTRIES PHIPPINES. INC.  
LPCI/15634/08**



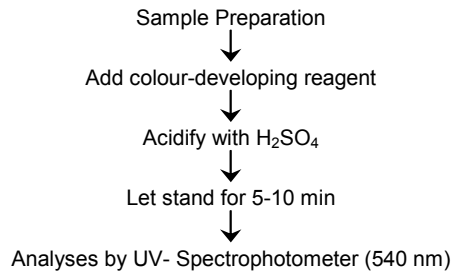
Note : (a) mg/kg = ppm  
(b) N.D. = Not Detected  
(c) MDL = Method Detection Limit

SGS LABORATORY SERVICES (M) SDN. BHD.

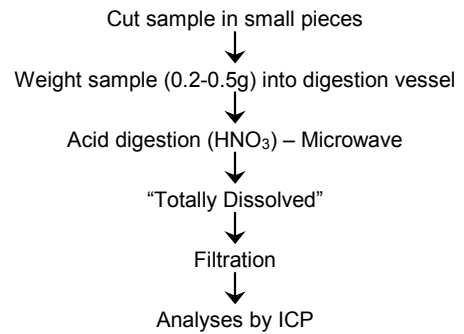
CHONG KIEN LEN  
B.Sc.(HONS) AMIC  
LAB MANAGER

This document is issued by the Company under its General Conditions of Service printed overleaf or available on request and accessible at [http://www.sgs.com/terms\\_and\\_conditions.htm](http://www.sgs.com/terms_and_conditions.htm). Attention is drawn to the limitation of liability, indemnification and jurisdiction issues defined therein. Any holder of this document is advised that information contained hereon reflects the Company's findings at the time of its intervention only and within the limits of Client's instructions, if any. The Company's sole responsibility is to its Client and this document does not exonerate parties to a transaction from exercising all their rights and obligations under the transaction documents. Any unauthorized alteration, forgery or falsification of the content or appearance of this document is unlawful and offenders may be prosecuted to the fullest extent of the law.  
The results shown in this test report refer only to the sample(s) tested unless otherwise stated. This Test Report cannot be reproduced, except in full, without prior written permission of the Company.

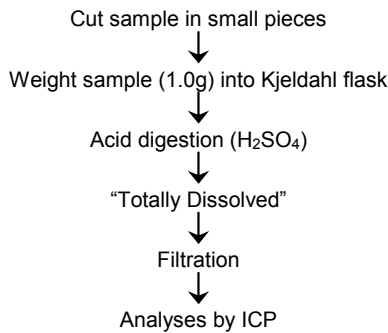
**1. DETERMINATION OF HEXAVALENT CHROMIUM BY METHOD US EPA 3060A/7196A**



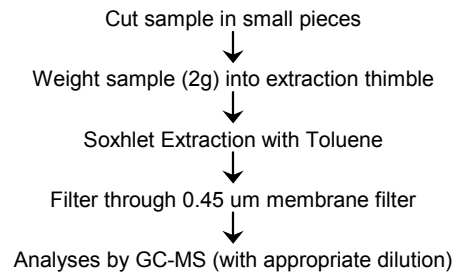
**2. MICROWAVE ASSISTED ACID DIGESTION OF ORGANICALLY BASED METRICES (US EPA 3051A)**



**3. PLASTIC – DETERMINATION OF CADMIUM – WET DECOMPOSITION METHOD (EN 1122) – METHOD B**



**4. DETERMINATION OF PBB/PBDE WITH GC-MS**



\*\*\*\* End of Report \*\*\*\*

SGS LABORATORY SERVICES (M) SDN. BHD.



CHONG KIEN LEN  
B.Sc.(HONS) AMIC  
LAB MANAGER

This document is issued by the Company under its General Conditions of Service printed overleaf or available on request and accessible at [http://www.sgs.com/terms\\_and\\_conditions.htm](http://www.sgs.com/terms_and_conditions.htm). Attention is drawn to the limitation of liability, indemnification and jurisdiction issues defined therein. Any holder of this document is advised that information contained hereon reflects the Company's findings at the time of its intervention only and within the limits of Client's instructions, if any. The Company's sole responsibility is to its Client and this document does not exonerate parties to a transaction from exercising all their rights and obligations under the transaction documents. Any unauthorized alteration, forgery or falsification of the content or appearance of this document is unlawful and offenders may be prosecuted to the fullest extent of the law.  
The results shown in this test report refer only to the sample(s) tested unless otherwise stated. This Test Report cannot be reproduced, except in full, without prior written permission of the Company.