

Test Report

No. LPCI/22371/09
CTS Ref. CTS/09/5000/M-SMM

Date : 04/01/2010

Page: 1 of 5

M-SMM ELECTRONIC SDN. BHD.
LOT 7 & 9, JALAN RAGUM 15/17,
40200 SHAH ALAM, SELANGOR DARUL EHSAN, MALAYSIA.

The following merchandise was (were) submitted and identified by the client as:

Sample Description	:	Ag finished leadframe on C7025
Name of Materials List	:	Metal
Material Lot Number	:	555471201
Date of manufactured	:	03-12-2008
Country on Origin	:	Japan
Sample Receiving Date	:	21/12/2009
Testing Period	:	21/12/2009 to 28/12/2009
Date Completed	:	28/12/2009
Date Reported	:	04/01/2010

Test Requested	:	In accordance with the RoHS Directive 2002/95/EC, and its amendment directives.
Test Method	:	Please refer to next page(s).
Test Results	:	Please refer to next page(s).
Analysts	:	Ng Mei Kheng & Yee Sook Wai

SGS LABORATORY SERVICES (M) SDN. BHD.



CHONG KIEN LEN
B.Sc.(HONS) AMIC
LAB MANAGER

This document is issued by the Company subject to its General Conditions of Service (www.sgs.com/terms_and_conditions.htm) and Terms and Conditions for Electronic Documents (www.sgs.com/terms_e-document.htm). Attention is drawn to the limitations of liability, indemnification and jurisdictional issues established therein. Even if printed this electronic document is to be treated as an original within the meaning of UCP 600 article 20b. The authenticity of this document may be verified at www.sgs.com/site/authentication. Any holder of this document is advised that information contained hereon reflects the Company's findings at the time of its intervention only and within the limits of client's instructions, if any. The Company's sole responsibility is to its Client and this document does not exonerate parties to a transaction from exercising all their rights and obligations under the transaction documents. Unless otherwise stated the results shown in this test report refer only to the sample(s) tested and such sample(s) are retained for three months only.

Test Report

No. LPCI/22371/09

Date : 04/01/2010

Page: 2 of 5

CTS Ref. CTS/09/5000/M-SMM

Test results:

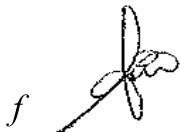
Test Part Description :

Sample Description : As per page 1 & 4

RoHS Directive 2002/95/EC

Test Item(s):	Unit	Test Method	Results	MDL
Cadmium(Cd)	mg/kg	With reference to IEC 62321:2008, and performed by ICP-OES	N.D.	2
Lead (Pb)	mg/kg	With reference to IEC 62321:2008, and performed by ICP-OES	N.D.	2
Mercury (Hg)	mg/kg	With reference to IEC 62321:2008, and performed by ICP-OES	N.D.	2
Hexavalent Chromium (CrVI) by Spot test / boiling water extraction (optional) #	---	With reference to IEC 62321:2008, and performed by UV-VIS Spectrophotometry (boiling water extraction only)	Negative	-
Sum of PBBs	mg/kg	With reference to IEC 62321:2008, and performed by GC-MS	N.D.	-
Monobromobiphenyl	mg/kg	With reference to IEC 62321:2008, and performed by GC-MS	N.D.	5
Dibromobiphenyl	mg/kg	With reference to IEC 62321:2008, and performed by GC-MS	N.D.	5
Tribromobiphenyl	mg/kg	With reference to IEC 62321:2008, and performed by GC-MS	N.D.	5
Tetrabromobiphenyl	mg/kg	With reference to IEC 62321:2008, and performed by GC-MS	N.D.	5
Hexabromobiphenyl	mg/kg	With reference to IEC 62321:2008, and performed by GC-MS	N.D.	5
Pentabromobiphenyl	mg/kg	With reference to IEC 62321:2008, and performed by GC-MS	N.D.	5
Heptabromobiphenyl	mg/kg	With reference to IEC 62321:2008, and performed by GC-MS	N.D.	5
Octabromobiphenyl	mg/kg	With reference to IEC 62321:2008, and performed by GC-MS	N.D.	5
Nonabromobiphenyl	mg/kg	With reference to IEC 62321:2008, and performed by GC-MS	N.D.	5
Decabromobiphenyl	mg/kg	With reference to IEC 62321:2008, and performed by GC-MS	N.D.	5

SGS LABORATORY SERVICES (M) SDN. BHD.



CHONG KIEN LEN
B.Sc.(HONS) AMIC
LAB MANAGER

This document is issued by the Company subject to its General Conditions of Service (www.sgs.com/terms_and_conditions.htm) and Terms and Conditions for Electronic Documents (www.sgs.com/terms_e-document.htm). Attention is drawn to the limitations of liability, indemnification and jurisdictional issues established therein. Even if printed this electronic document is to be treated as an original within the meaning of UCP 600 article 20b. The authenticity of this document may be verified at www.sgs.com/site/authentication. Any holder of this document is advised that information contained hereon reflects the Company's findings at the time of its intervention only and within the limits of client's instructions, if any. The Company's sole responsibility is to its Client and this document does not exonerate parties to a transaction from exercising all their rights and obligations under the transaction documents. Unless otherwise stated the results shown in this test report refer only to the sample(s) tested and such sample(s) are retained for three months only.

Test Report

No. LPCI/22371/09

Date : 04/01/2010

Page: 3 of 5

CTS Ref. CTS/09/5000/M-SMM

Test Item(s):	Unit	Test Method	Results	MDL
Sum of PBDEs	mg/kg	With reference to IEC 62321:2008, and performed by GC-MS	N.D.	-
Monobromodiphenyl ether	mg/kg	With reference to IEC 62321:2008, and performed by GC-MS	N.D.	5
Dibromodiphenyl ether	mg/kg	With reference to IEC 62321:2008, and performed by GC-MS	N.D.	5
Tribromodiphenyl ether	mg/kg	With reference to IEC 62321:2008, and performed by GC-MS	N.D.	5
Tetrabromodiphenyl ether	mg/kg	With reference to IEC 62321:2008, and performed by GC-MS	N.D.	5
Pentabromodiphenyl ether	mg/kg	With reference to IEC 62321:2008, and performed by GC-MS	N.D.	5
Hexabromodiphenyl ether	mg/kg	With reference to IEC 62321:2008, and performed by GC-MS	N.D.	5
Heptabromodiphenyl ether	mg/kg	With reference to IEC 62321:2008, and performed by GC-MS	N.D.	5
Octabromodiphenyl ether	mg/kg	With reference to IEC 62321:2008, and performed by GC-MS	N.D.	5
Nonabromodiphenyl ether	mg/kg	With reference to IEC 62321:2008, and performed by GC-MS	N.D.	5
Decabromodiphenyl ether ##	mg/kg	With reference to IEC 62321:2008, and performed by GC-MS	N.D.	5

Note : (a) mg/kg = ppm ; (0.1wt% = 1000ppm)

(b) N.D. = Not Detected

(c) MDL = Method Detection Limit

(d) # = a. Positive means the presence of Cr(VI) on the tested areas
b. Negative means the absence of Cr(VI) on the tested areas

For corrosion protection coatings on metals: Information on storage conditions and production date of the tested sample is unavailable and thus results of Cr(VI) represent status of the sample at the time of testing represent status of the sample at the time of testing.

(e) ## = The exemption of DecaBDE in polymeric application according 2005/717/EC was overruled by the European Court of Justice by its decision of 01.04.2008. Subsequently DecaBDE is included in the sum of PBDE after 01.07.2008

(f) - = Not regulated

SGS LABORATORY SERVICES (M) SDN. BHD.



CHONG KIEN LEN
B.Sc.(HONS) AMIC
LAB MANAGER

This document is issued by the Company subject to its General Conditions of Service (www.sgs.com/terms_and_conditions.htm) and Terms and Conditions for Electronic Documents (www.sgs.com/terms_e-document.htm). Attention is drawn to the limitations of liability, indemnification and jurisdictional issues established therein. Even if printed this electronic document is to be treated as an original within the meaning of UCP 600 article 20b. The authenticity of this document may be verified at www.sgs.com/site.com/authentication. Any holder of this document is advised that information contained hereon reflects the Company's findings at the time of its intervention only and within the limits of client's instructions, if any. The Company's sole responsibility is to its Client and this document does not exonerate parties to a transaction from exercising all their rights and obligations under the transaction documents. Unless otherwise stated the results shown in this test report refer only to the sample(s) tested and such sample(s) are retained for three months only.

Test Report

No. LPCI/22371/09

Date : 04/01/2010

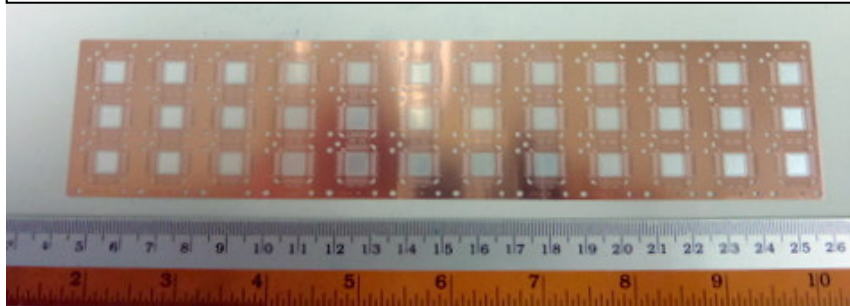
Page: 4 of 5

CTS Ref. CTS/09/5000/M-SMM

Test Part Description :

Sample Description : Ag finished leadframe on C7025
Name of Materials List : Metal
Material Lot Number : 555471201
Date of manufactured : 03-12-2008
Country on Origin : Japan

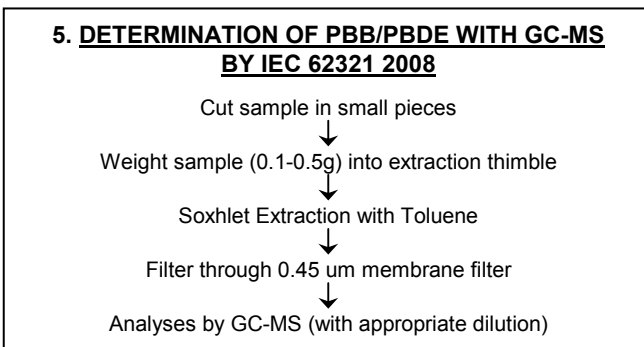
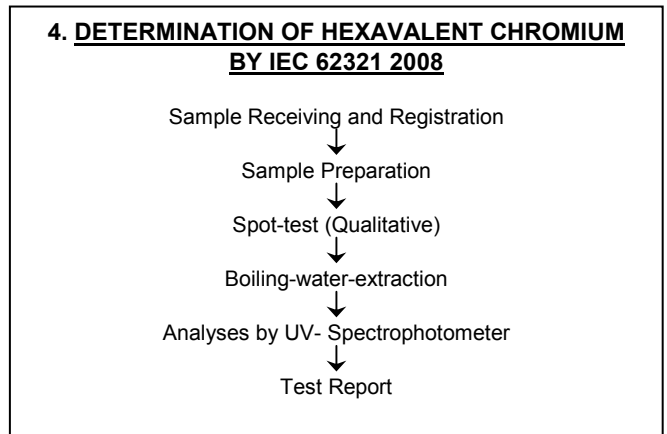
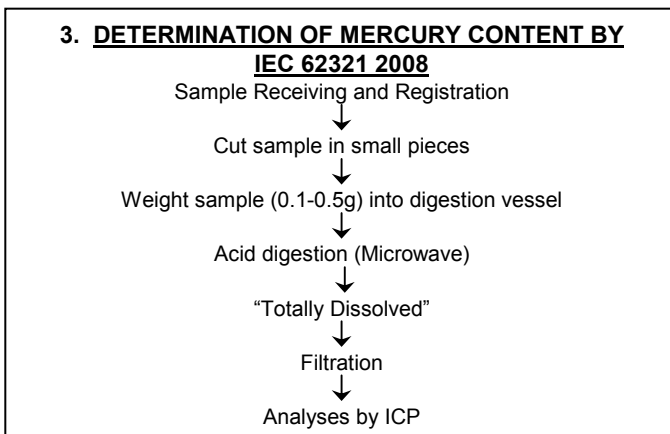
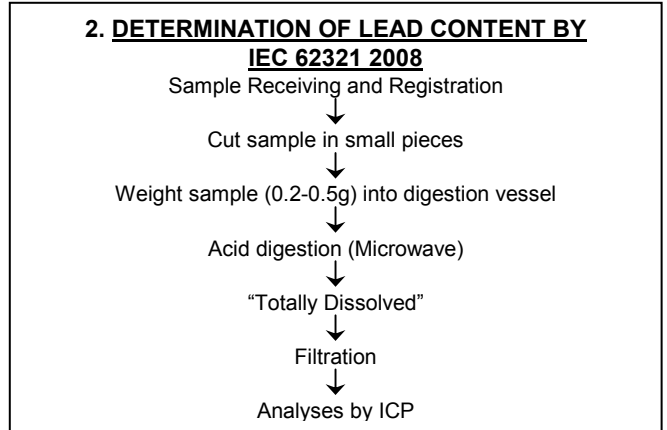
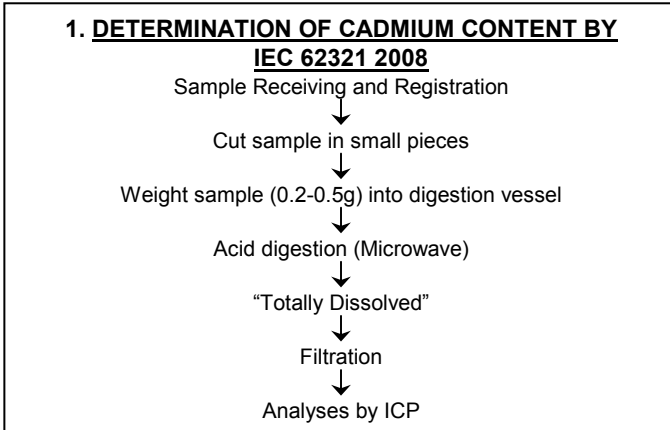
M-SMM ELECTRONIC SDN. BHD.
LPCI/22371/09



SGS LABORATORY SERVICES (M) SDN. BHD.

CHONG KIEN LEN
B.Sc.(HONS) AMIC
LAB MANAGER

This document is issued by the Company subject to its General Conditions of Service (www.sgs.com/terms_and_conditions.htm) and Terms and Conditions for Electronic Documents (www.sgs.com/terms_e-document.htm). Attention is drawn to the limitations of liability, indemnification and jurisdictional issues established therein. Even if printed this electronic document is to be treated as an original within the meaning of UCP 600 article 20b. The authenticity of this document may be verified at www.sgs.com/site.com/authentication. Any holder of this document is advised that information contained hereon reflects the Company's findings at the time of its intervention only and within the limits of client's instructions, if any. The Company's sole responsibility is to its Client and this document does not exonerate parties to a transaction from exercising all their rights and obligations under the transaction documents. Unless otherwise stated the results shown in this test report refer only to the sample(s) tested and such sample(s) are retained for three months only.



**** End of Report ****

SGS LABORATORY SERVICES (M) SDN. BHD.



CHONG KIEN LEN
B.Sc.(HONS) AMIC
LAB MANAGER

This document is issued by the Company subject to its General Conditions of Service (www.sgs.com/terms_and_conditions.htm) and Terms and Conditions for Electronic Documents (www.sgs.com/terms_e-document.htm). Attention is drawn to the limitations of liability, indemnification and jurisdictional issues established therein. Even if printed this electronic document is to be treated as an original within the meaning of UCP 600 article 20b. The authenticity of this document may be verified at www.sgs.com/site/authentication. Any holder of this document is advised that information contained hereon reflects the Company's findings at the time of its intervention only and within the limits of client's instructions, if any. The Company's sole responsibility is to its Client and this document does not exonerate parties to a transaction from exercising all their rights and obligations under the transaction documents. Unless otherwise stated the results shown in this test report refer only to the sample(s) tested and such sample(s) are retained for three months only.