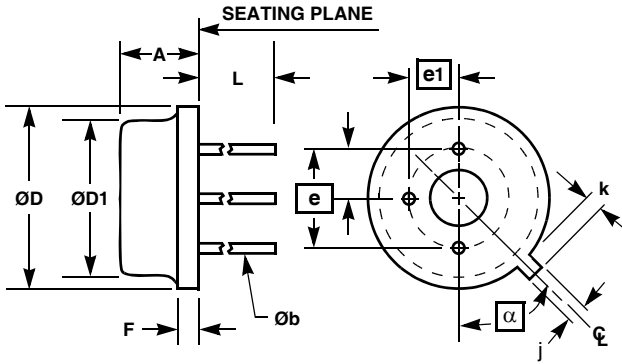


Metal Can Packages (Can)



NOTES:

1. Measured from maximum diameter of the actual device.
2. Measured from tab centerline.
3. N is number of leads
4. Dimensioning and tolerancing per ANSI Y14.5M - 1982.
5. Controlling dimension: INCH.

T3.B

3 Lead Metal Can Package TO-206AB (TO-46)

SYMBOL	INCHES		MILLIMETERS		NOTES
	MIN	MAX	MIN	MAX	
A	0.065	0.085	1.65	2.16	-
b	0.016	0.021	0.41	0.53	-
D	0.209	0.230	5.31	5.84	-
D1	0.178	0.195	4.52	4.95	-
F	-	0.040	-	1.02	-
k	0.028	0.048	0.71	1.22	1
j	0.036	0.046	0.91	1.17	-
L	0.500	-	12.70	-	-
e	0.100 BSC		2.54 BSC		-
e1	0.050 BSC		1.27 BSC		-
α	45		45		2
N	3		3		3

Rev. 0 1/26/00