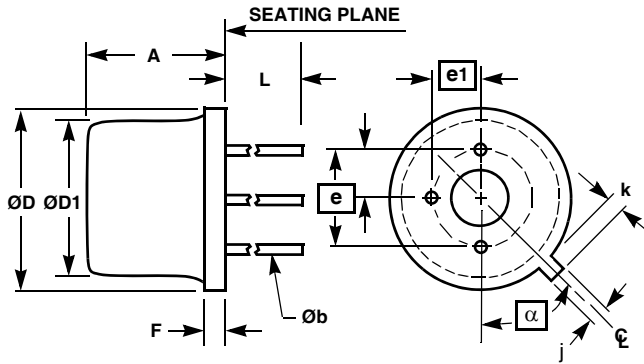


Metal Can Packages (Can)



NOTES:

1. Measured from maximum diameter of the actual device.
2. Measured from tab centerline.
3. N is number of leads
4. Dimensioning and tolerancing per ANSI Y14.5M - 1982.
5. Controlling dimension: INCH.

T3.A
3 LEAD METAL CAN PACKAGE

SYMBOL	INCHES		MILLIMETERS		NOTES
	MIN	MAX	MIN	MAX	
A	0.130	0.150	3.30	3.81	-
b	0.016	0.019	0.41	0.48	-
D	0.205	0.220	5.21	5.59	-
D1	0.180	0.190	4.57	4.83	-
F	0.010	0.025	0.25	0.64	-
k	0.033	0.048	0.84	1.22	1
j	0.036	0.046	0.91	1.17	-
L	0.500	0.560	12.70	14.22	-
e	0.100 BSC		2.54 BSC		-
e1	0.050 BSC		1.27 BSC		-
α	45		45		2
N	3		3		3

Rev. 0 4/94