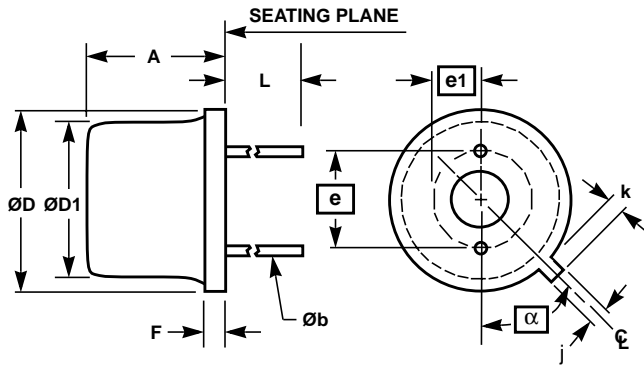


**Metal Can Packages (Can)**



NOTES:

1. Measured from maximum diameter of the actual device.
2. Measured from tab centerline.
3. N is number of leads.
4. Dimensioning and tolerancing per ANSI Y14.5M - 1982.
5. Controlling dimension: INCH.

**T2.A**  
2 LEAD METAL CAN PACKAGE

| SYMBOL   | INCHES    |       | MILLIMETERS |       | NOTES |
|----------|-----------|-------|-------------|-------|-------|
|          | MIN       | MAX   | MIN         | MAX   |       |
| A        | 0.130     | 0.150 | 3.30        | 3.81  | -     |
| b        | 0.016     | 0.019 | 0.41        | 0.48  | -     |
| D        | 0.205     | 0.22  | 5.21        | 5.59  | -     |
| D1       | 0.180     | 0.190 | 4.57        | 4.83  | -     |
| F        | 0.010     | 0.025 | 0.25        | 0.64  | -     |
| k        | 0.033     | 0.046 | 0.84        | 1.17  | 1     |
| j        | 0.033     | 0.045 | 0.84        | 1.14  | -     |
| L        | 0.500     | 0.560 | 12.70       | 14.22 | -     |
| e        | 0.100 BSC |       | 2.54 BSC    |       | -     |
| e1       | -         |       | -           |       | -     |
| $\alpha$ | 45        |       | 45          |       | 2     |
| N        | 2         |       | 2           |       | 3     |

Rev. 0 4/94