

KDC2710LEVAL, KDC2710CEVAL, KDC2708LEVAL, KDC2708CEVAL

KDC2710LEVAL, KDC2710CEVAL, KDC2708LEVAL, KDC2708CEVAL Schematic

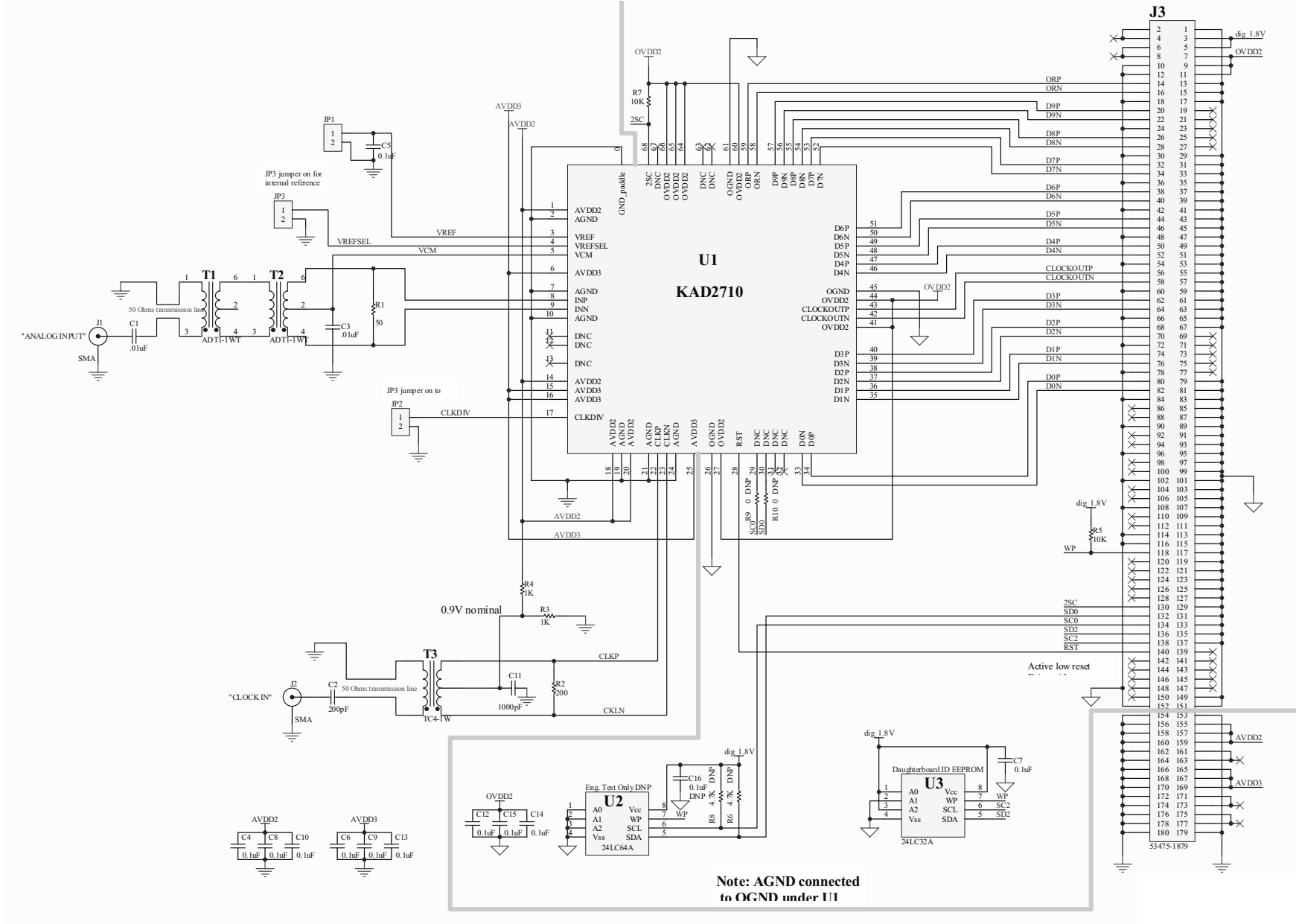


FIGURE 1. ENTIRE DAUGHTER CARD SCHEMATIC

KDC2710LEVAL, KDC2710CEVAL, KDC2708LEVAL, KDC2708CEVAL Layers

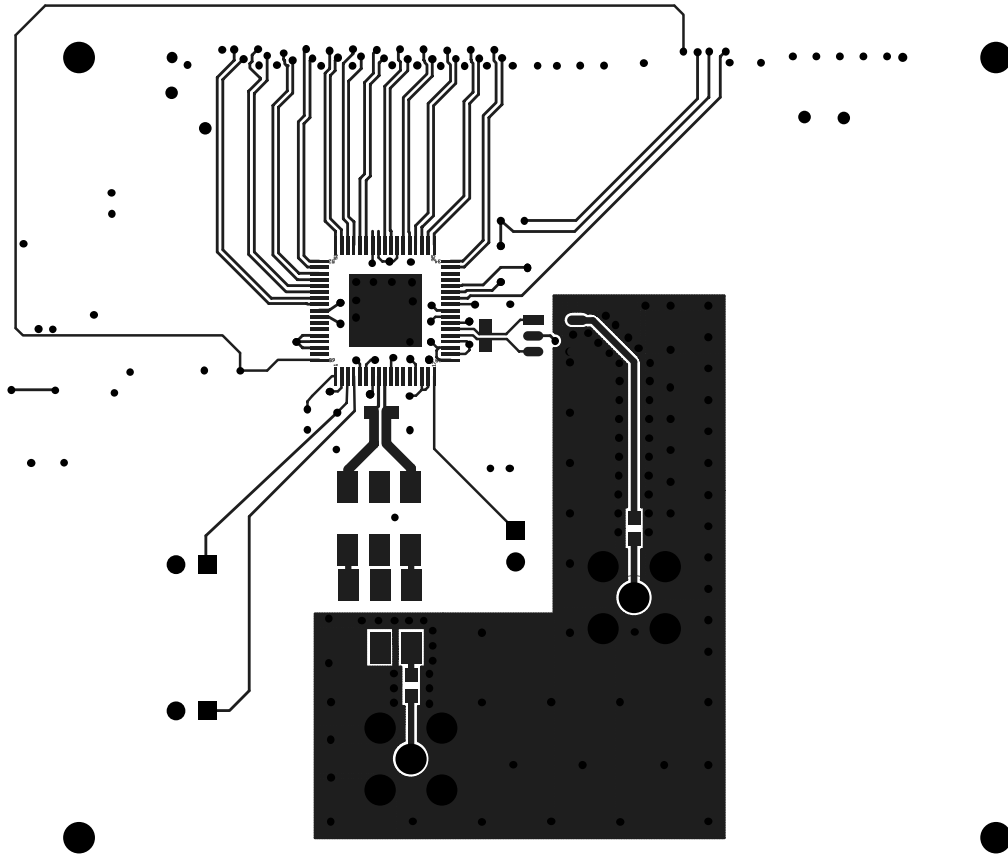


FIGURE 2. PRIMARY SIDE

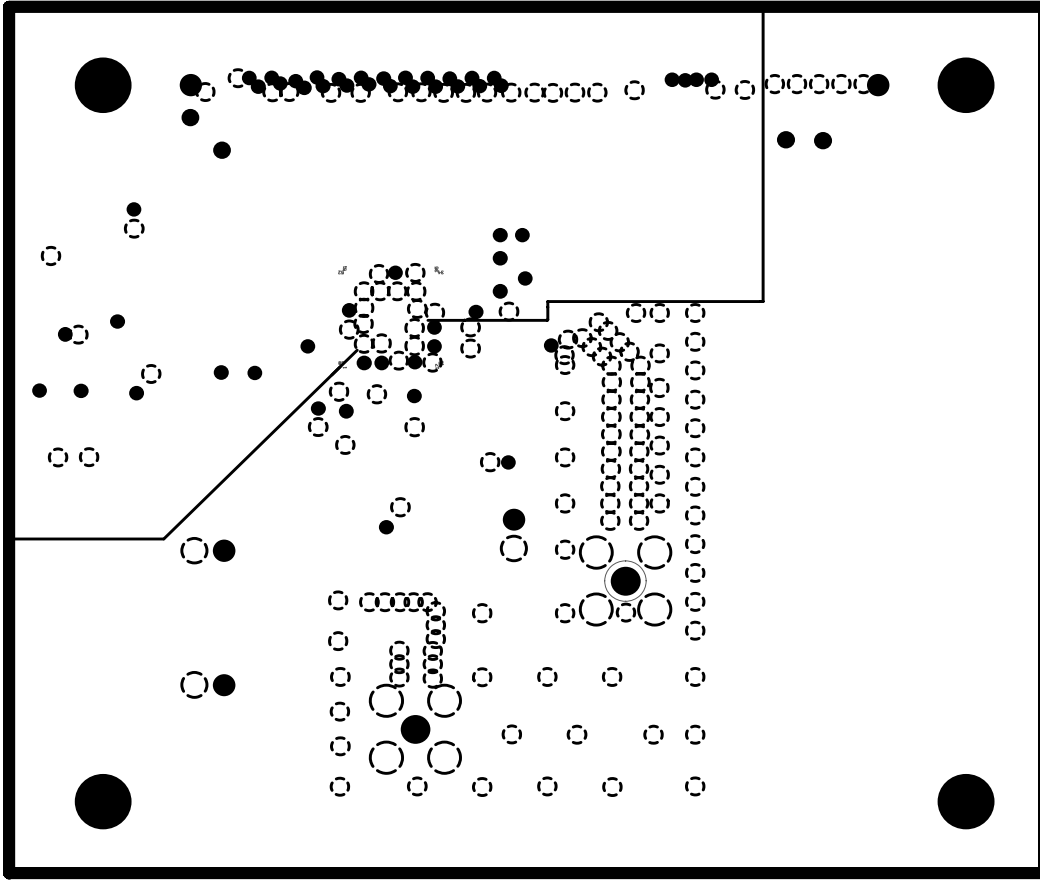


FIGURE 3. INTERNAL GROUND PLANE

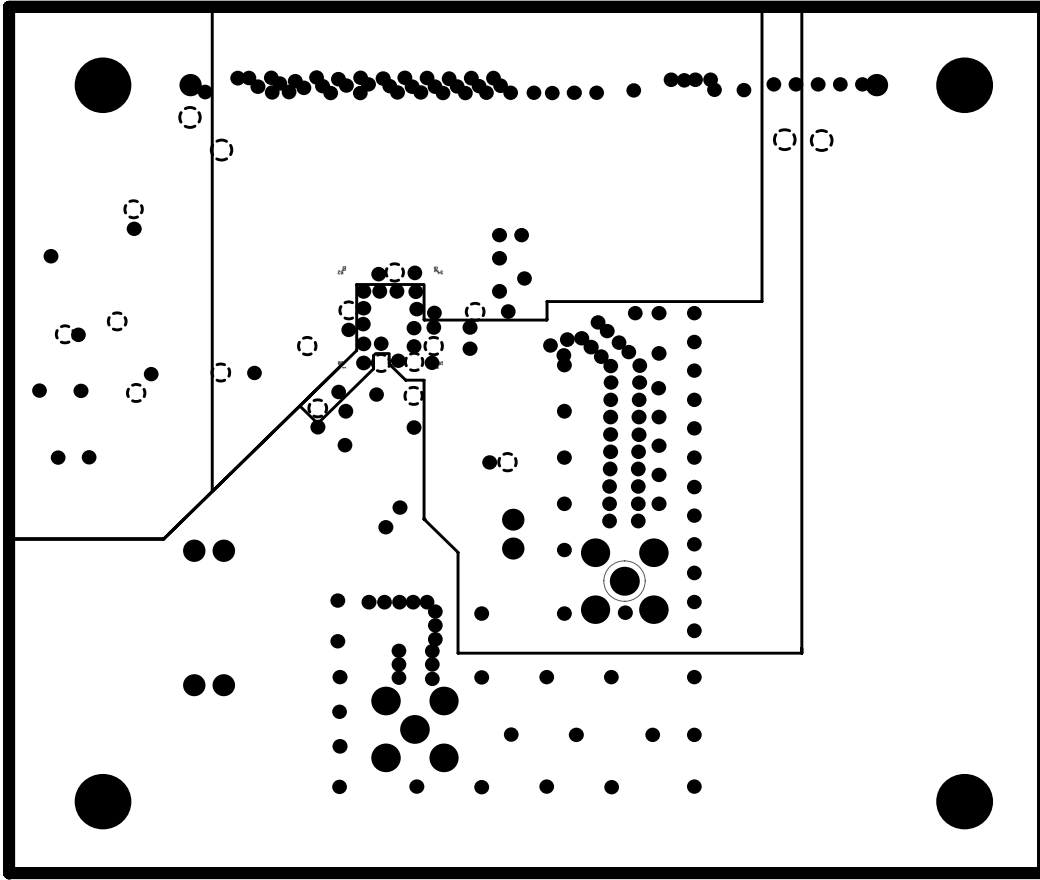


FIGURE 4. INTERNAL POWER PLANE

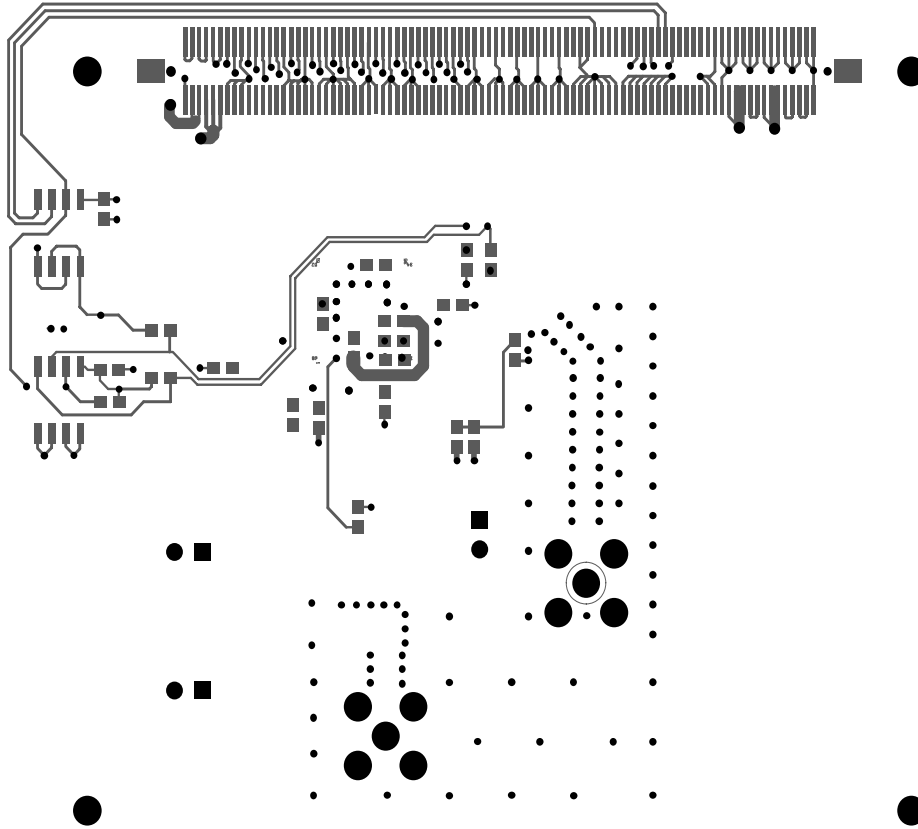
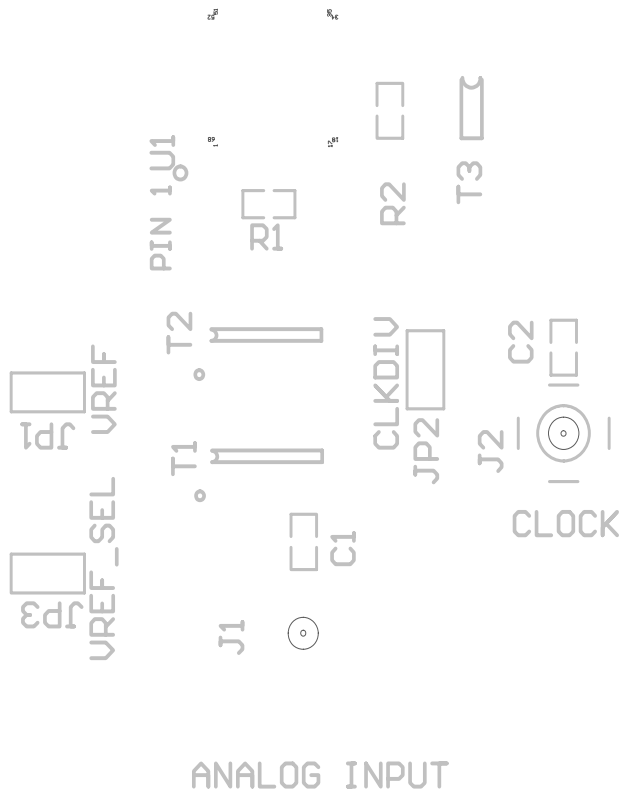


FIGURE 5. SECONDARY SIDE



ANALOG INPUT

FIGURE 6. PRIMARY SIDE SILKSCREEN

KDB-2710-L REV 02

KDC2710LEVAL, KDC2710CEVAL, KDC2708LEVAL, KDC2708CEVAL Layers (Continued)

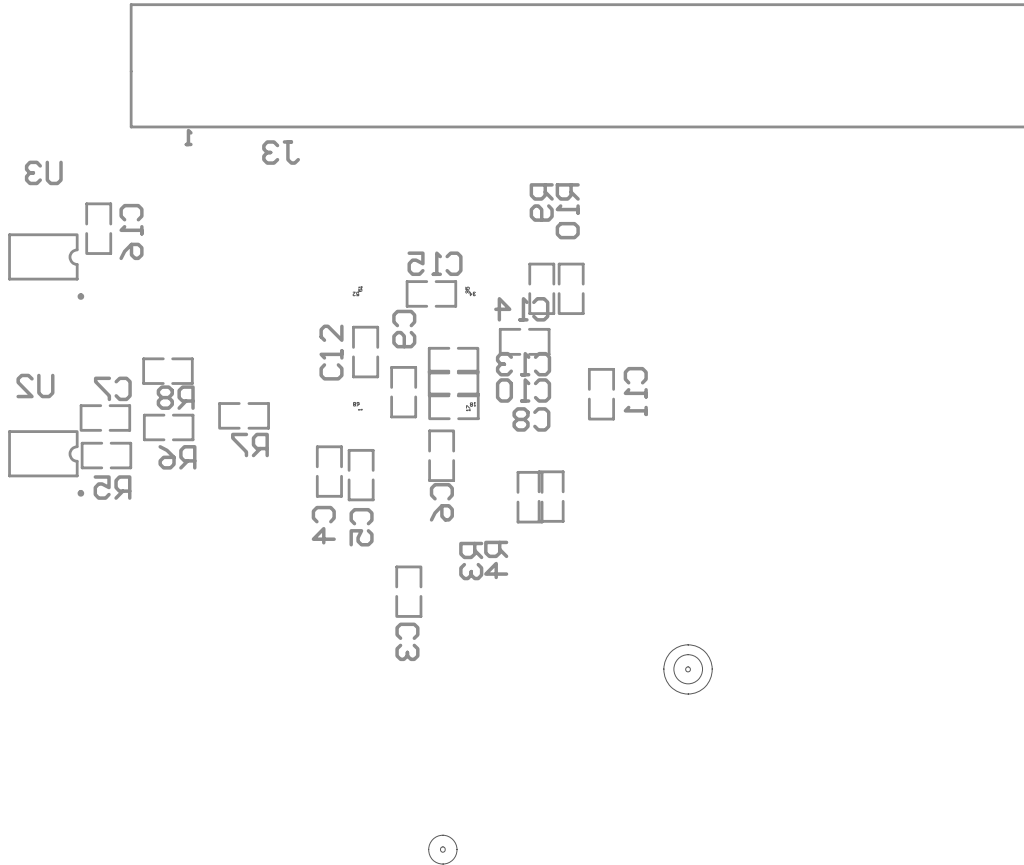


FIGURE 7. SECONDARY SIDE SILKSCREEN

Intersil Corporation reserves the right to make changes in circuit design, software and/or specifications at any time without notice. Accordingly, the reader is cautioned to verify that the Application Note or Technical Brief is current before proceeding.