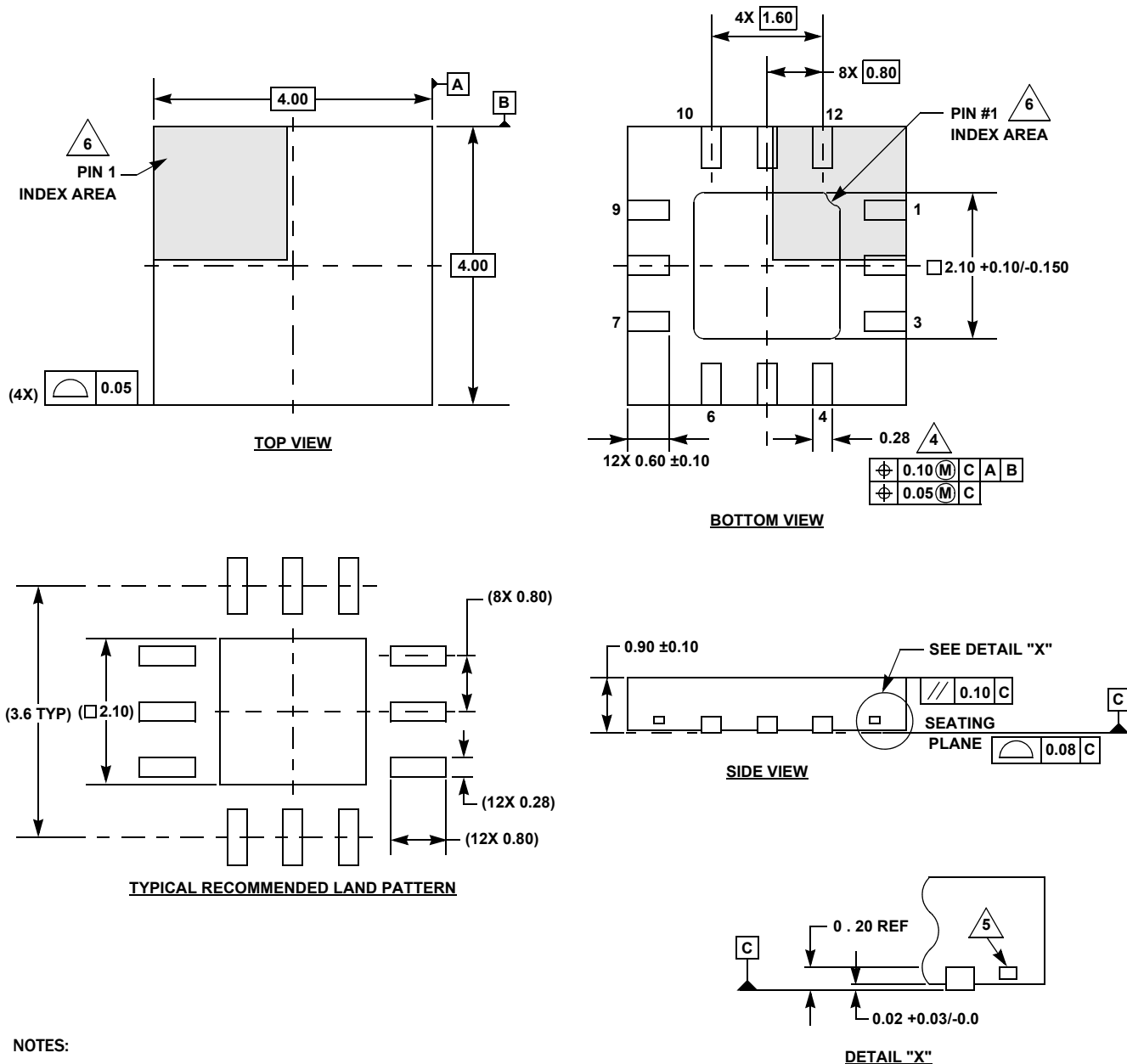


# Plastic Packages for Integrated Circuits

## Package Outline Drawing

L12.4x4  
12 LEAD SAW SINGULATED QUAD FLAT NO-LEAD PLASTIC PACKAGE (QFN)  
Rev 2, 5/17



### NOTES:

- Dimensions are in millimeters.  
Dimension in ( ) are for reference only.
- Dimensioning and tolerancing per ASME Y14.5M-1994.
- Unless otherwise specified, tolerance: Decimal  $\pm 0.05$ .
- Dimension applies to the metalized terminal and is measured between 0.15mm and 0.30mm from the terminal tip.
- Tiebar shown (if present) is a non-functional feature.
- The configuration of the pin #1 identifier is optional, but must be located within the zone indicated. The pin #1 identifier may be either a mold or mark feature.