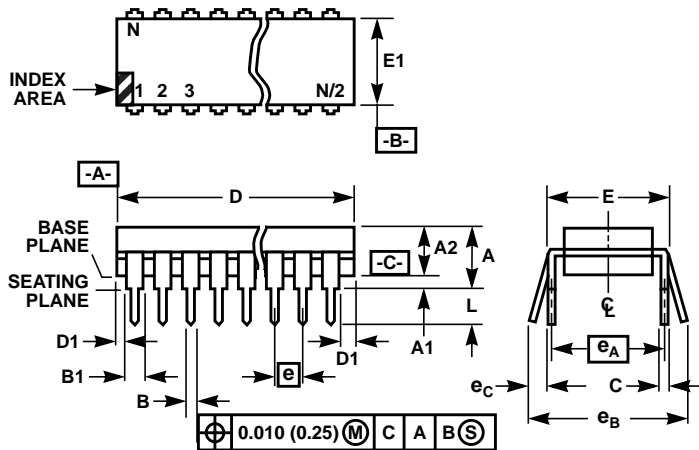


Dual-In-Line Plastic Packages (PDIP)



NOTES:

1. Controlling Dimensions: INCH. In case of conflict between English and Metric dimensions, the inch dimensions control.
2. Dimensioning and tolerancing per ANSI Y14.5M-1982.
3. Symbols are defined in the "MO Series Symbol List" in Section 2.2 of Publication No. 95.
4. Dimensions A, A1 and L are measured with the package seated in JEDEC seating plane gauge GS-3.
5. D, D1, and E1 dimensions do not include mold flash or protrusions. Mold flash or protrusions shall not exceed 0.010 inch (0.25mm).
6. E and e_A are measured with the leads constrained to be perpendicular to datum $-C-$.
7. e_B and e_C are measured at the lead tips with the leads unconstrained. e_C must be zero or greater.
8. B1 maximum dimensions do not include dambar protrusions. Dambar protrusions shall not exceed 0.010 inch (0.25mm).
9. N is the maximum number of terminal positions.
10. Corner leads (1, N, N/2 and N/2 + 1) for E8.3, E16.3, E18.3, E28.3, E42.6 will have a B1 dimension of 0.030 - 0.045 inch (0.76 - 1.14mm).

E22.4 (JEDEC MS-010-AA ISSUE C)
22 LEAD DUAL-IN-LINE PLASTIC PACKAGE

| SYMBOL | INCHES | | MILLIMETERS | | NOTES |
|--------|-----------|-------|-------------|-------|-------|
| | MIN | MAX | MIN | MAX | |
| A | - | 0.210 | - | 5.33 | 4 |
| A1 | 0.015 | - | 0.39 | - | 4 |
| A2 | 0.125 | 0.195 | 3.18 | 4.95 | - |
| B | 0.014 | 0.022 | 0.356 | 0.558 | - |
| B1 | 0.045 | 0.065 | 1.15 | 1.65 | 8 |
| C | 0.009 | 0.015 | 0.229 | 0.381 | - |
| D | 1.065 | 1.120 | 27.06 | 28.44 | 5 |
| D1 | 0.005 | - | 0.13 | - | 5 |
| E | 0.390 | 0.425 | 9.91 | 10.79 | 6 |
| E1 | 0.330 | 0.390 | 8.39 | 9.90 | 5 |
| e | 0.100 BSC | | 2.54 BSC | | - |
| e_A | 0.400 BSC | | 10.16 BSC | | 6 |
| e_B | - | 0.500 | - | 12.70 | 7 |
| L | 0.115 | 0.160 | 2.93 | 4.06 | 4 |
| N | 22 | | 22 | | 9 |

Rev. 0 12/93